



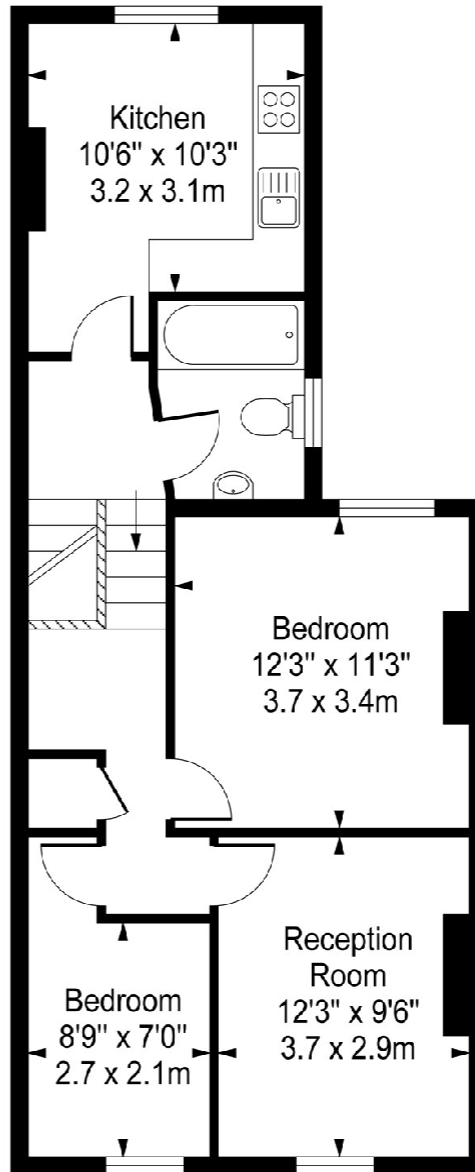
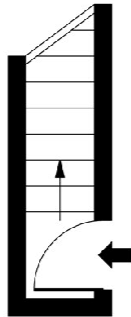
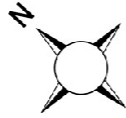
Northcote Road

Between the Commons SW11

FOR SALE

This two bedroom upper flat is situated in the heart of fashionable Northcote Road with a wide range of shops, bars and restaurants literally on the doorstep. Retaining many of its original features, this property has lots of potential for updating and improvement. It has a sense of space throughout due to the half landings and roof light. The current lease is 62 years but a statutory lease extension can be negotiated.

Northcote Road,
Battersea, SW11



First Floor

Second Floor

Approx Gross Internal Area **630 Sq Ft - 58.5 Sq M**

For Illustration Purposes Only - Not To Scale
photosandfloorplans.com ©



PROPERTY FEATURES

- Victorian Building
- Two Bedrooms
- Reception Room
- Bathroom
- Large Kitchen
- Original Features
- Unmodernised
- 630 Sq Ft / 58.5 Sq M

VIEWING BY APPOINTMENT ONLY

The particulars do not constitute part of an offer or contract; the particulars including text descriptions, photographs and plans are only for the guidance of prospective purchasers and must not be relied on as statements of fact; nothing in the particulars shall be deemed as a statement that the property is in good condition nor that any services or facilities are in good working order; measurements given are approximate; prior to viewing we recommend that you discuss particular points of interest with a staff member to avoid a wasted journey

