



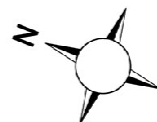
Northcote Road

Between the Commons SW11

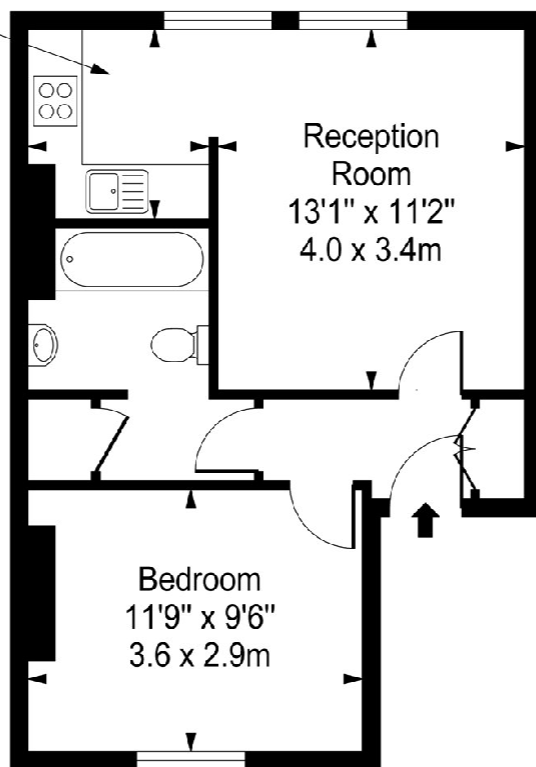
FOR SALE

This one-bedroom top floor flat is ripe for updating. Situated in a converted Victorian building on fashionable Northcote Road within a mile of tube/train connections at Clapham Junction and Clapham South and close to bus services, it comprises a generous double bedroom, large bathroom and reception room with adjoining kitchen. Northcote Road lies in the heart of the area known as Between the Commons. It is a short walk from both Wandsworth Common and Clapham Common and has a wealth of shops, bars and restaurants and a thriving weekend street food market.

Northcote Road, Battersea, SW11



Kitchen
7'0" x 6'6"
2.1 x 2.0m



Reception
Room
13'1" x 11'2"
4.0 x 3.4m

Bedroom
11'9" x 9'6"
3.6 x 2.9m

Second Floor

Approx Gross Internal Area **420 Sq Ft - 39.0 Sq M**

For Illustration Purposes Only - Not To Scale
photosandfloorplans.com ©



PROPERTY FEATURES

- Victorian Building
- Kitchen
- Hallway
- Built-In Storage
- Long Lease
- 420 Sq Ft / 39.0 Sq M

VIEWING BY APPOINTMENT ONLY

The particulars do not constitute part of an offer or contract; the particulars including text descriptions, photographs and plans are only for the guidance of prospective purchasers and must not be relied on as statements of fact; nothing in the particulars shall be deemed as a statement that the property is in good condition nor that any services or facilities are in good working order; measurements given are approximate; prior to viewing we recommend that you discuss particular points of interest with a staff member to avoid a wasted journey

