



Broomwood Road
Between the Commons
SW11

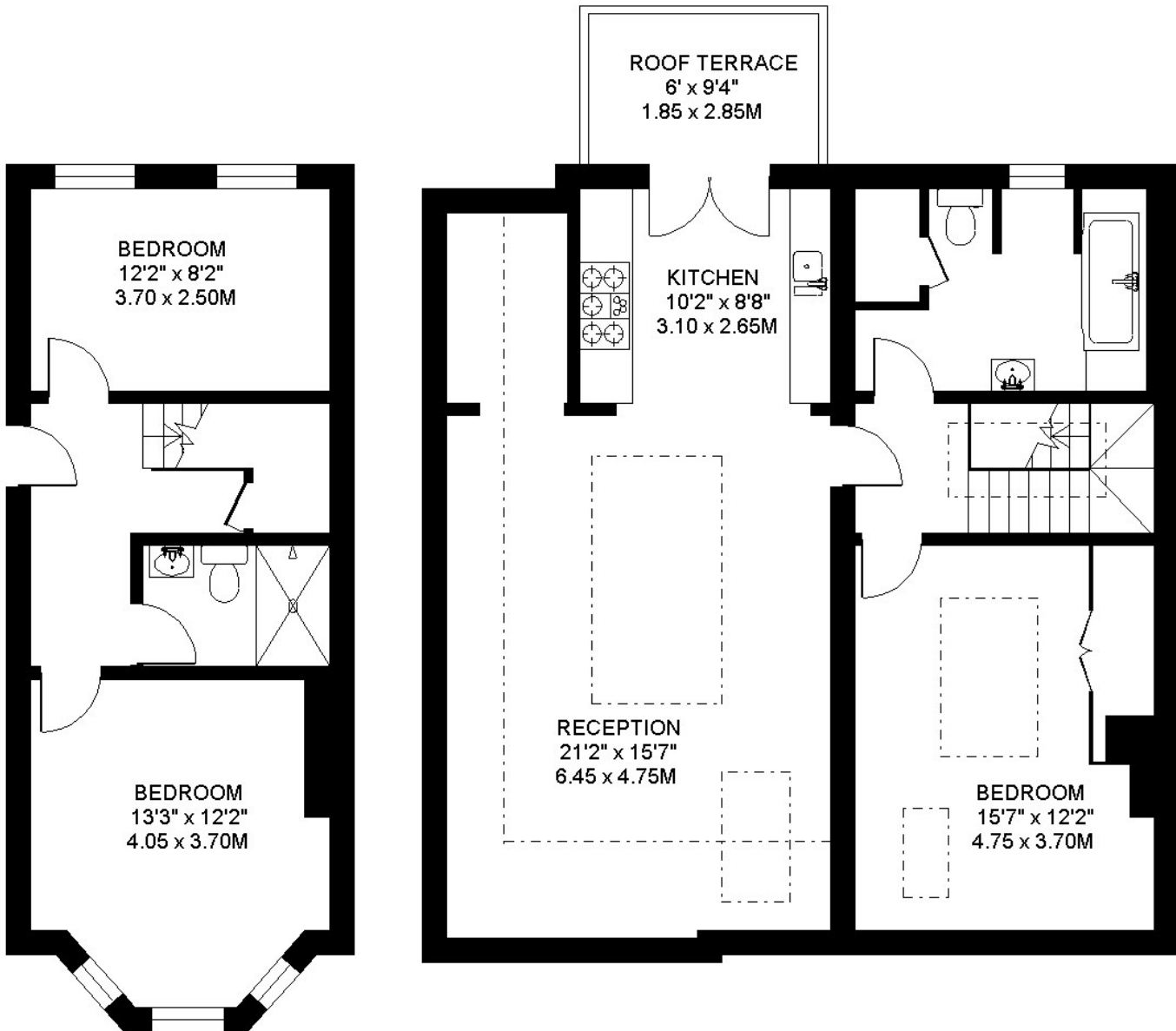
TO LET

This outstanding loft apartment has been innovatively renovated and extended. Its huge floor area of 1241 SQ.FT offers wonderfully light, contemporary living spaces with electrically-operated glass atrium and doors to a high-level private sunny terrace. It also enjoys use of a large landscaped rear garden. Situated just off fashionable Northcote Road, close to Honeywell School and good train / tube links to The City / West End.

BROOMWOOD ROAD. SW11

APPROXIMATE INTERNAL FLOOR AREA

1241 SQ.FT / 115.2 SQ.M.

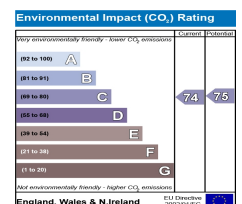
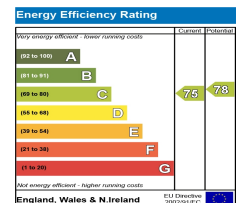
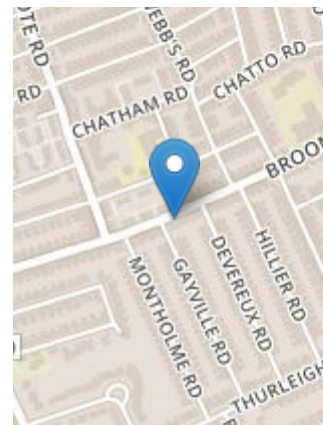


COPYRIGHT FLOORPLAN PRODUCED FOR
" JOHN THOROGOOD "
 BY FLOORPLANNERS 07801 228850



PROPERTY FEATURES

- Communal Entrance Hall
- Superb Open-Plan Reception / Kitchen With Glass Atrium
- South-Facing Roof Terrace
- Large Shared Garden With Bike Shed
- Bathroom / WC
- 2 Further Double Bedrooms
- Shower Room / WC
- Utility Cupboard
- Long and Short Lets Available
- 1241 SQ.FT / 115.2 SQ.M



VIEWING BY APPOINTMENT ONLY

The particulars do not constitute part of an offer or contract; the particulars including text descriptions, photographs and plans are only for the guidance of prospective purchasers and must not be relied on as statements of fact; nothing in the particulars shall be deemed as a statement that the property is in good condition nor that any services or facilities are in good working order; measurements given are approximate; prior to viewing we recommend that you discuss particular points of interest with a staff member to avoid a wasted journey